

LEYDEN ROCK METROPOLITAN DISTRICT
SPECIAL MEETING
Leyden Rock Clubhouse (17685 W. 83rd Arvada, CO)
Tuesday, February 6, 2024 at 6:00 P.M.
<https://leydenrocklife.com/>

Brett Vernon, President	Term to May 2027
Scott J. Plummer, Secretary	Term to May 2027
Jeff Cunningham, Treasurer	Term to May 2025
Christian Ardita, Assistant Secretary	Term to May 2025
Tanis Batsel Stewart, Assistant Secretary	Term to May 2025

NOTICE OF SPECIAL MEETING AND AGENDA

1. Call to Order/Declaration of Quorum
2. Director Conflict of Interest Disclosures
3. Approval of Agenda
4. Public Comment – Members of the public may express their views to the Board on matters that affect the District on items not otherwise on the agenda. Comments will be limited to three (3) minutes per person.
5. Capital Projects Discussion
 - a. Discussion regarding Metro District Tract Projects
 - i. Major Vista
 1. String of Pearls
 - ii. Major Vista/Mudflow
 1. Timber Way (walkway between w 85th Blf & W 84th Pl)
 2. The 84th Ave area (between Yucca & Windy)
 - iii. Drainage Remediation
 1. Multiple Locations
 2. Winter Rock
 - b. Discussion Regarding Entrance Projects
 - i. Culebra St Entrance
 - ii. Yule St Entrance
 - c. Discussion Regarding Park Enhancement Projects
 - i. Westridge Park
 - ii. Daybreak Park
 - d. Discussion Regarding Trails
6. District Management Matters
7. Director’s Matters
 - a. Discussion regarding City of Arvada’s Emergency Evacuation Routes (**enclosure**)
 - b. Discussion regarding Jellyfish lighting
8. Other Business
9. Adjourn

2024 Capital Projects Regular Meetings

January 2; February 6; March 5; April 2; May 7; June 4; July 2; August 6; September 3; October 1; November 5;
and December 3 at 6:00 p.m. via teleconference.

From: John Firouzi <jfirouzi@arvada.org>
Sent: Friday, January 19, 2024 1:12 PM
To: Brett Vernon <brett.vernon@leydenrocklife.com>
Subject: 1/16 Leyden Presentation Follow-up

Hi Brett,

The City of Arvada appreciates the opportunity to present an update on the Leyden Emergency Preparedness Study to the Leyden Rock Metro District Board on 1/16/24. *The attached slide deck is the information that we presented.* The project team has completed the technical analysis associated with the stakeholder recommendations that have been received throughout the project. The team is interested in proceeding to the final meeting to share the study results.

During the presentation, the City documented feedback from the Leyden Metro District Board related to the recommendations. We also understand that the Board would like some additional time to review and discuss the partnership framework request from the City. We appreciate this consideration and would like to hear from you on establishing an MOU (partnership framework).

Our goal is to proceed with setting up the next public meeting date for late February and share the results of the study as well as our partnership efforts. We ask for your feedback by February 5th to be able to develop the appropriate communication and meeting materials. We understand that your next board meeting is February 15th. Is it needed that the board meets again before providing the feedback to the City?

Please let me know.
Thank you,

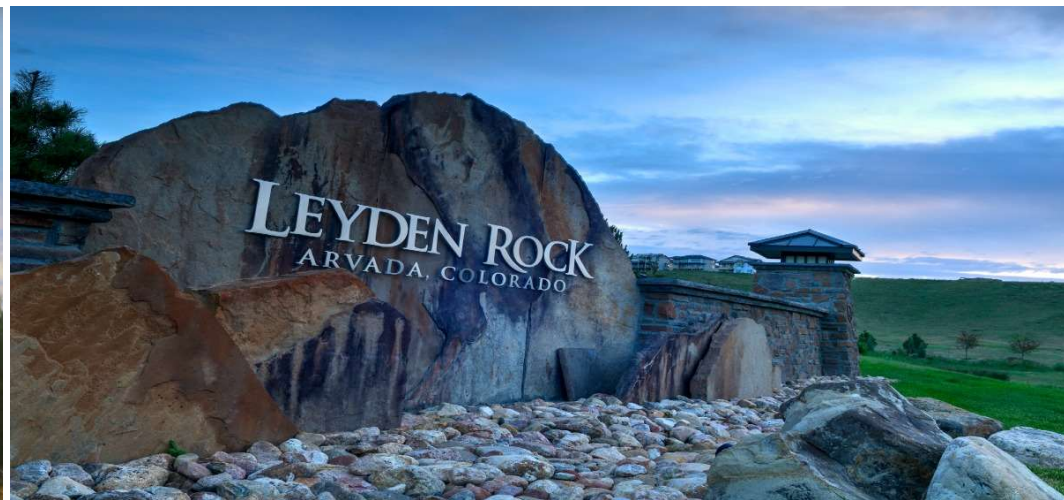
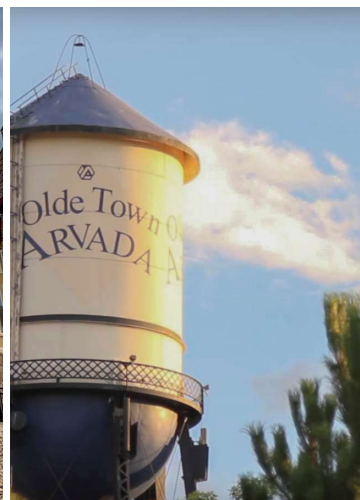
City of Arvada

Leyden Neighborhood

Emergency Preparedness Study

Assessment Overview and Final Recommendations

January 16, 2024



Agenda

- ✓ Summary of Project Efforts
- ✓ Information on Assessment Methodology
- ✓ Technical Assessment Results
- ✓ Recommendations
- ✓ Study Next Steps
- ✓ Feedback from the Board





Summary of Project Efforts

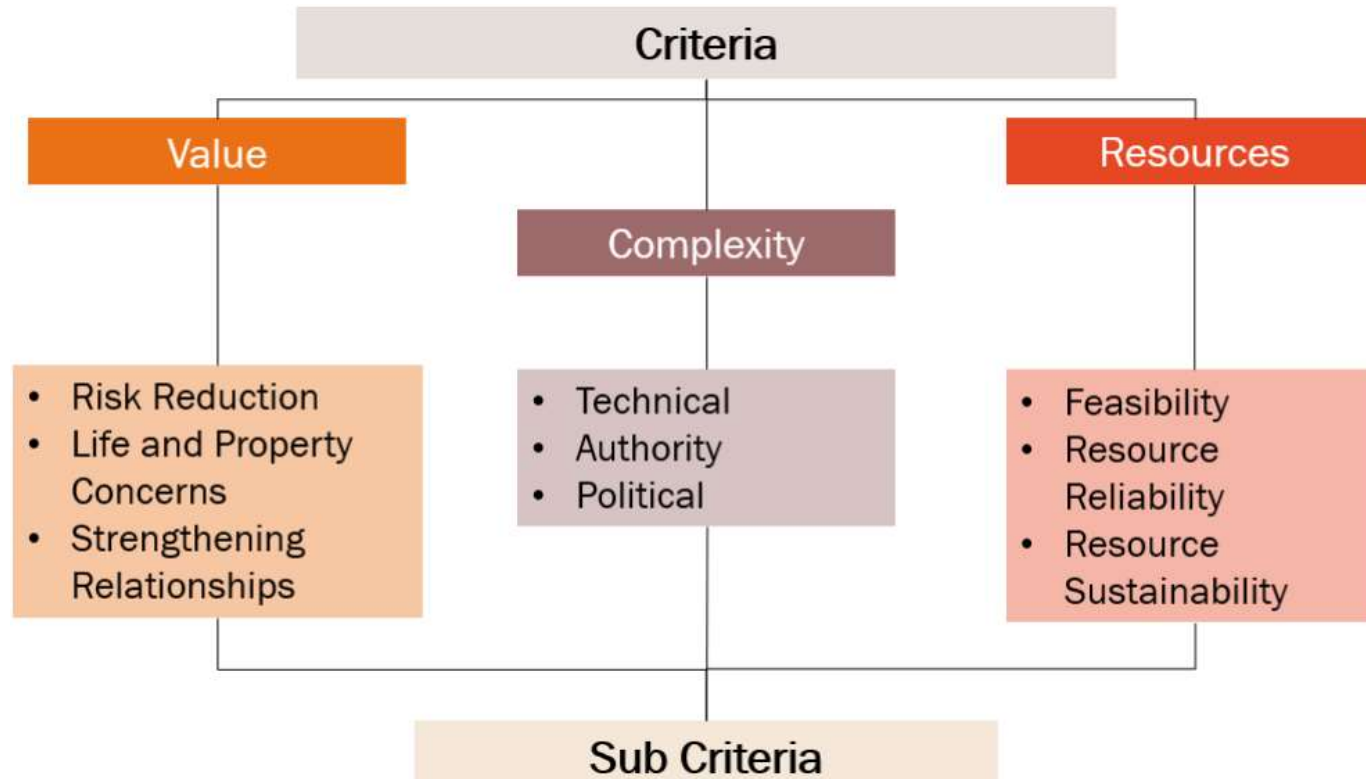
Summary of Project Efforts

- May 1st SpeakUp Webpage Launched, Public Survey Published
- June 1st 1st Public Meeting (Community Discussion)
- June 13th Fire District CWPP Community Meeting
- June 30th Consultant Memo on Study Methodology
- July 17th Analyzing Recommendations (Short- and Long-Term Categories)
- August 4th Transportation System and Evacuation Analysis
- Sept. 6th 2nd Public Meeting (Open House)
- Dec. 15th Technical Team Review of CWPP and Study Recommendations
- Jan. 16th Metro District Presentation on Study Recommendations
- Feb. TBD 3rd Public Meeting & Final Report



Assessment Methodology

Methodology Overview



Selection of Criteria and Sub Criteria

Criteria	Description	Sub Criteria	Description
Value	Answers WHY the recommendation should be implemented by evaluating the benefit and importance of the proposed action.	Risk Reduction	Evaluates the risk reduction, risk avoidance, or hazard mitigation benefits generated by the action.
		Life and Property Concerns	Evaluates the potential reduction of risks related to immediate life loss and/or widespread property damage of the proposed action.
		Strengthening Relationships	Evaluates the internal and external relationships created or strengthened by the proposed action.

Selection of Criteria and Sub Criteria (cont.)

Criteria	Description	Sub Criteria	Description
Complexity	Answers HOW the recommendation should be implemented by evaluating the anticipated difficulty associated with implementing the proposed action.	Technical	Evaluates the extent of process, technology, or expertise needed to implement the action.
		Authority	Evaluates the concentration of control, identifying the level of cooperation needed for an action.
		Political	Evaluates the necessary alignment of expectations needed to build buy-in to implement the action.

Selection of Criteria and Sub Criteria (cont.)

Criteria	Description	Sub Criteria	Description
Resources	Answers WHAT it will take to implement the recommendation by evaluating the level of resource commitment required to implement and sustain the proposed action.	Feasibility	Evaluates the quantity of financial and staffing resources required to implement the action.
		Resource Reliability	Evaluates the consistent availability of quality resources provided to implement the proposed action.
		Resource Sustainability	Evaluates the ongoing availability of resources needed to achieve and maintain the desired outcomes of the action.

Quantitative Measures

Criteria	Sub Criteria	Ranking	Quantitative Measure
Value	Risk Reduction	<p>1- Low: Action provides none or few risk reduction benefits.</p> <p>2- Medium: Action provides an acceptable or reasonable level of risk reduction benefits.</p> <p>3- High: Action provides clear and critical benefits to risk reduction.</p>	<p>1- Individual property owners</p> <p>2- Individual HOA</p> <p>3- Multiple Neighborhoods</p>
	Life and Property Concerns	<p>1- Low: Action does not address potential impacts to life and/or property</p> <p>2 - Medium: Action could reduce potential life and/or property impacts</p> <p>3 - High: Action will reduce potential life and/or property impacts</p>	<p>1- Property Damage Only (PDO)</p> <p>2- Addresses Injury Conditions</p> <p>3- Addresses Fatal Conditions</p>
	Strengthening Relationships	<p>1- Low: Action does not involve relationship building</p> <p>2- Medium: Action includes relationship building between one or more parties</p> <p>3- High: Action includes involvement with multiple parties</p>	<p>1- Impacts only Internal City Staff</p> <p>2- Impacts City Staff and Metro District</p> <p>3- Impacts City Staff and External Partners</p>
Complexity	Technical	<p>1- Low: Action requires outside subject expertise or knowledge.</p> <p>2 - Medium: Action requires subject expertise or knowledge currently existing within the city.</p> <p>3 - High: Action can be implemented within existing subject expertise or knowledge.</p>	<p>1- Requires External Resources</p> <p>2- Internal Staffing w/On-Calls</p> <p>3- Requires Internal Resources</p>
	Authority	<p>1- Low: Action is subject to multiple authorities that are not aligned. Would require formal agreement.</p> <p>2 - Medium: Action is aligned by multiple authorities. Would require an agreement in principle.</p> <p>3 - High: Action is unilateral and does not require agreements to authorize action(s).</p>	<p>1- IGA Required.</p> <p>2 - MOU Required</p> <p>3- No Agreement Required</p>
	Political	<p>1- Low: Action is unlikely to be agreed to by leadership and external partners.</p> <p>2 - Medium: Action requires information sharing to establish buy-in but is unlikely to generate issues.</p> <p>3 - High: Action is unlikely to be agreed to by leadership and external partners. Action has existing buy-in among leadership and external partners.</p>	<p>1- Not Identified as CSG/CSR</p> <p>2- Council Strategic Goals (CSG)</p> <p>3- Council Strategic Result (CSR)</p>
Resources	Feasibility	<p>1- Low: Action is cost or staff prohibitive and requires major budget/contract actions.</p> <p>2 - Medium: Action requires redistribution of internal resources, action can be authorized by city managers.</p> <p>3 - High: Action can be funded and staffed within existing resource allocations within divisions/departments.</p>	<p>1- \$500K+</p> <p>2- \$200K-\$499K</p> <p>3- \$0 - \$199K</p>
	Resource Reliability	<p>1- Low: Action does not have approved resources available</p> <p>2 - Medium: Action requires resources that may not be sufficient or approved for the proposed action.</p> <p>3 - High: Action requires resources that are consistently available and are sufficient for the proposed action.</p>	<p>1- Capital Budget – Needed</p> <p>2- Capital Budget – Proposed</p> <p>3- Capital Budget – Programmed</p>
	Resource Sustainability	<p>1- Low: Action requires sustained resources that are not currently available within existing budgetary mechanisms.</p> <p>2 - Medium: Action requires sustained resources that may require re-allocation away from other programs.</p> <p>3 - High: Action requires only a one-time investment or minimal ongoing resource investment.</p>	<p>1- Operating Budget – Needed</p> <p>2- Operating Budget – Adjusted</p> <p>3- Operating Budget – Approved</p>



Technical Assessment

Recommendations: Communication

RECOMMENDATION CARRIED FORWARD

Invest in Electronic Message Boards and Highway Advisory Radios

Electronic Message Boards at strategic locations can provide warnings and alerts, as well as direct traffic during evacuations. Existing message boards could serve to display educational information for preparedness. Highway Advisory Radios will effectively enable emergency messages to be transmitted to motorists in transit.



RELATED RECOMMENDATIONS NOT CARRIED FORWARD

Enhance Cellular Network

Leyden Rock Metro District has evaluated proposed telecommunication installations and is discussing opportunities to enhance cellular reception. The recommendation is being addressed by the parties involved in the process.

Obtain Data and Utilize Neighborhood Message Boards

As HOA message boards are not under the City's ownership, the recommendation is not carried forward. The neighborhood may decide to utilize existing message boards to display educational materials for preparedness.

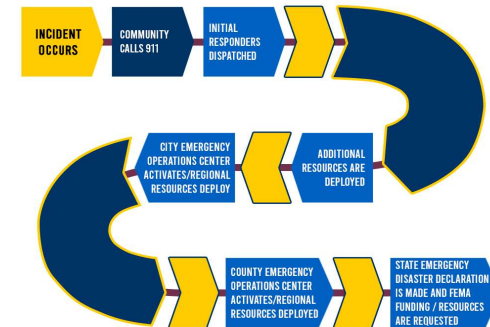
Recommendations: Operations

RECOMMENDATION CARRIED FORWARD

Update Emergency Operations Plan

The City and its partners are prioritizing updates to the Emergency Operations Plan using the CWPP, public input, and consultant analysis:

- Evacuation Annex with priorities, zonal evacuation phases, and annual reviews.
- Communication/Notification Protocols
- Promoting Smart911 and Lookout Alerts to support individuals with accessibility and functional needs



RELATED RECOMMENDATIONS NOT CARRIED FORWARD

Create Neighborhood Mitigation Plan

The HOA maintains its website information ^{PA0} with neighborhood specific plans and messages. The City supports this effort and encourages HOAs to use government information for emergency preparedness. Resources from the City, Arvada Fire Protection District, and FEMA are available for emergency planning purposes.

- <https://arvadafireco.gov/>
- <https://www.arvadaco.gov/682/Emergency-Preparedness>
- <https://www.ready.gov/>

Slide 14

PA0 John - Please provide context as to why this wasn't carried forward.
Pepper, Alyssa, 2024-01-03T04:19:59.917

JFO 0 Updated. Please review.
John Firouzi, 2024-01-03T22:15:29.749

Recommendations: Preparedness

RECOMMENDATION CARRIED FORWARD

Conduct Annual Evacuation Ready Workshop

PA2

Arvada Fire Protection District (AFPD) conducted two workshops in June 2023 related to property protection and neighborhood resiliency. The workshops are tactical offering residents Go Bags with check-lists, sign-up information for Smart911/Lookout Alert notifications, and education on personal property measures that can support resiliency.



Establish Neighborhood Network

The City of Arvada offers a “resilient neighbors” program through existing resources. The program is funded and staffed, offering educational workshops and neighborhood grants to support connecting neighbors, training, and education. Better informed residents can take steps to promote resiliency.



RELATED RECOMMENDATIONS NOT CARRIED FORWARD

Bi-Yearly Testing of Alert System

P.

FEMA currently tests the emergency alert system – embedded by default in all cell phones. Localized testing of Smart911 and Lookout Alerts require individual sign-ups and do not offer value-added additional information. Testing too frequently can result in communication fatigue, thus presenting an adverse effect.

Slide 15

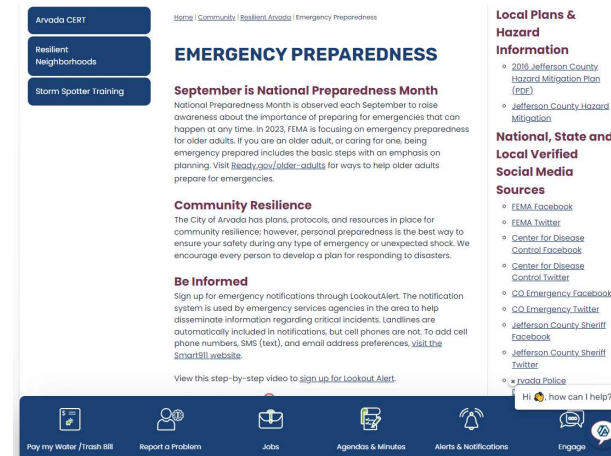
- PA0** John - Can you get stats from Nick on those registered for the alert system
Pepper, Alyssa, 2023-12-20T06:09:13.745
- JF0 0** We won't be using stats here. We can add the stats to the report and Nick will be at the 1/16 meeting to help with any specifics on Lookout Alert and Smart911 registrations.
John Firouzi, 2024-01-03T22:14:50.635
- PA1** John - can you provide additional context on discussion?
Pepper, Alyssa, 2024-01-03T05:09:42.475
- JF1 0** Updated. Please review.
John Firouzi, 2024-01-03T22:14:57.327
- PA2** Establish neighborhood-based person-to-person networks to support notification during an active incident (potentially by coordinating with active bodies such as CERT).
Pepper, Alyssa, 2024-01-03T05:10:37.126
- JF2 0** Updated. Please review.
John Firouzi, 2024-01-03T22:15:12.368

Recommendations: Public Awareness

RECOMMENDATION CARRIED FORWARD

Finalize and Publish Communication Flowchart

The flowchart will be published with informational materials to increase public awareness of the emergency notification process. The City's emergency preparedness webpage will serve as a resource for public access and awareness.



RELATED RECOMMENDATIONS NOT CARRIED FORWARD

Conduct Annual Evacuation Tabletop Exercise

The technical team conducts tabletop exercises to review emergency scenarios and test emergency protocols. These exercises and coordination efforts are ongoing through the year, with considerations to weather patterns, community growth, and hazards. The ongoing effort is more focused and offers more value than an annual exercise.

Slide 16

PA0 John - please provide context of discussion had regarding the flowchart and the tabletop exercise
Pepper, Alyssa, 2024-01-03T05:11:08.630

JFO 0 Updated - please review.
John Firouzi, 2024-01-03T22:13:53.363

Recommendations: Transportation Network

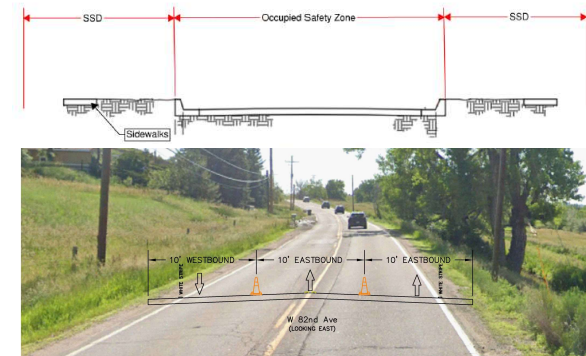
RECOMMENDATION CARRIED FORWARD

Enhance W 82nd Ave (Roadside) Corridor

Add reflective roadside markers, shoulder enhancements, and managed vegetation to establish a risk reduction zones along W 82nd Ave corridor. The risk reduction zone is based on AFD analysis and establishes 73-foot buffer areas on both sides of W 82nd Ave to serve as mitigation areas, a protected passage corridor, and to protect fire fighters when defending the corridor.

SH-72 (Indiana St) Widening

Continue local efforts to widen the CDOT highway to support emergency response needs during traffic congestion. Highway widening address community growth and provides value beyond emergency needs.



RELATED RECOMMENDATIONS NOT CARRIED FORWARD

Develop Railroad Crossing, Enforce On-street Parking Ordinances, Adding Access Roads, and Zonal Evacuations, Expanding Trail/Sidewalks, Developing Jefferson Parkway

The 30–60-minute transportation analysis showed that enhancing the roadside infrastructure has greater cost-benefit analysis than the other transportation recommendations. Recommendations related to trail connections present life safety hazards such as trapping individuals in high-risk areas.

Slide 17

- PA0** John - Please provide additional context as you see fit as to why this wasn't carried forward.
Pepper, Alyssa, 2024-01-03T04:45:50.213
- PA0 0** I can also create multiple slides to describe why recommendations are not carried forward
Pepper, Alyssa, 2024-01-03T04:48:32.023
- JF0 1** Updated. Please review.
John Firouzi, 2024-01-03T22:13:42.059

Summary Recommendations

- Establish Neighborhood Network
- Invest in Electronic Message Boards and Advisory Radios
- Update Emergency Operations Plan
- Conduct Annual Evacuation Ready Workshop
- Finalize and Publish Communication Flowchart
- Add W 82nd Ave Roadside Reflectors
- Enhance W 82nd Ave Corridor (Risk Reduction Zone)
- SH-72 (Indiana St) Widening

Next Steps

- Internal – Study to be used as model for regional coordination
- Partnership – City and Metro District Framework on infrastructure needs.
- February - Public Meeting #3, publish Final Report
- Formalizing Partnership (IGA) to initiate Engineering



Discussion and Feedback Welcome